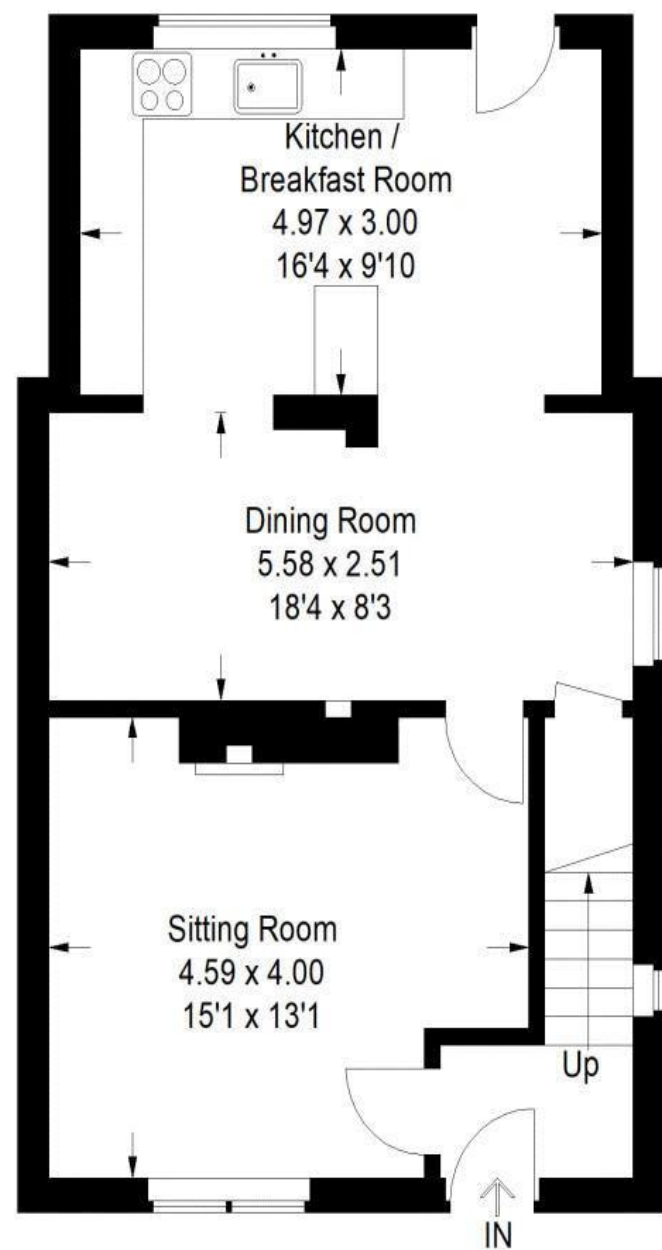
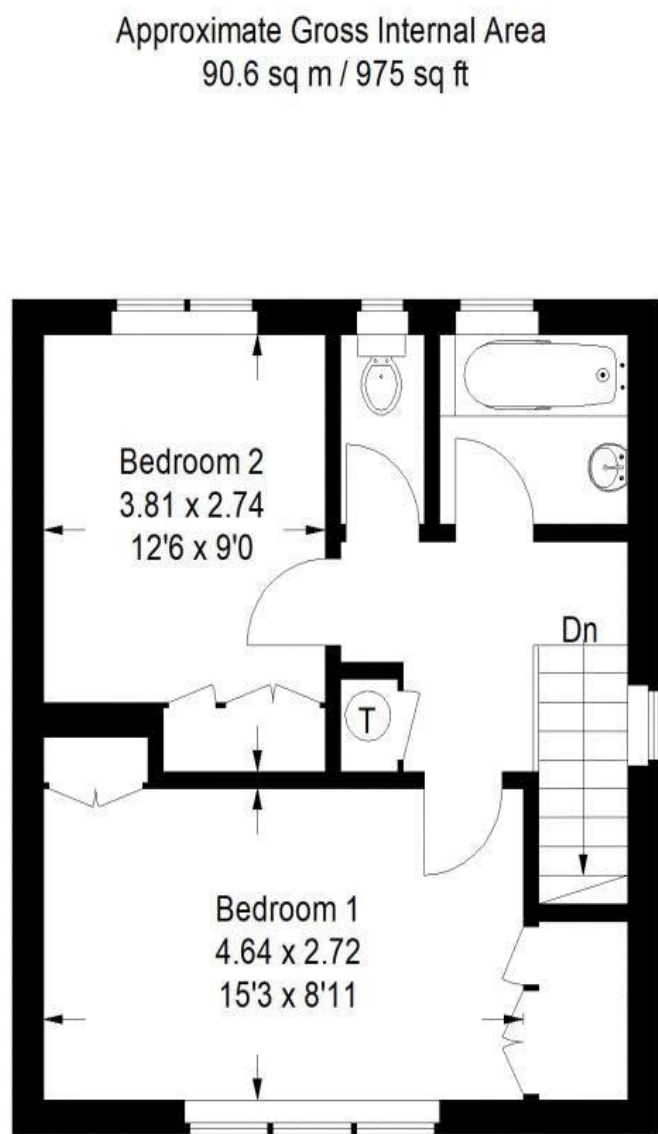


The Floorplan...



Ground Floor



First Floor

Illustration for identification purposes only, measurements are approximate, not to scale.

More Details From...

Call: Brian Cox North Harrow: 020 3866 6640

Email: Azi.rahman@brian-cox.co.uk

Web: www.brian-cox.co.uk



Consumer Protection from Unfair Trading Regulations 2008 We have not tested any apparatus, equipment, fixtures, fittings or services and so cannot verify that they are in working order or fit for purpose. You are advised to obtain verification from your solicitor or surveyor. References to the tenure of a property are based on information supplied by the seller. We have not had sight of the title documents and a buyer is advised to obtain verification from their solicitor. Items shown in photographs are not included unless specifically mentioned within the sales particulars, but may be available by separate negotiation. We advise you to book an appointment to view before embarking on any journey to see a property, and check its availability.



0203 866 6640
brian-cox.co.uk



Brian Cox Estate Agents are delighted to offer this larger than average two bedroom extended end of terrace house to the market! This property is located within easy reach of shopping and transport facilities including Headstone Lane BR station. The property is offered for sale in very good order throughout and benefits from both gas central heating, double glazed windows, two good sized reception rooms and the extended kitchen leading out onto a rear garden of around 90ft in length.



Guide Price £435,000

Headstone Lane, Harrow HA3 6NP



In Brief...

- Two Double Bedroom House
- Extended To The Rear
- 90FT Garden
- Good Condition Throughout
- Two Receptions
- EPC Rating E & Council Tax Band C



The Location...

Nearest Stations ...

Headstone (0.3 miles)
North Harrow (0.7 miles)
West Harrow (0.9 miles)

North Harrow is a suburban area of North West London, situated North-West of Central Harrow within the London Borough of Harrow. North Harrow train station is a London Underground station situated in North Harrow in North West London. The station is on the Metropolitan line between Harrow-on-the-Hill (southbound) and Pinner (northbound). The area is served well by local amenities including a post office, Tesco Express, a selection of restaurants, take-aways & cafes and independent specialist shops. There are several schools and churches in the area.